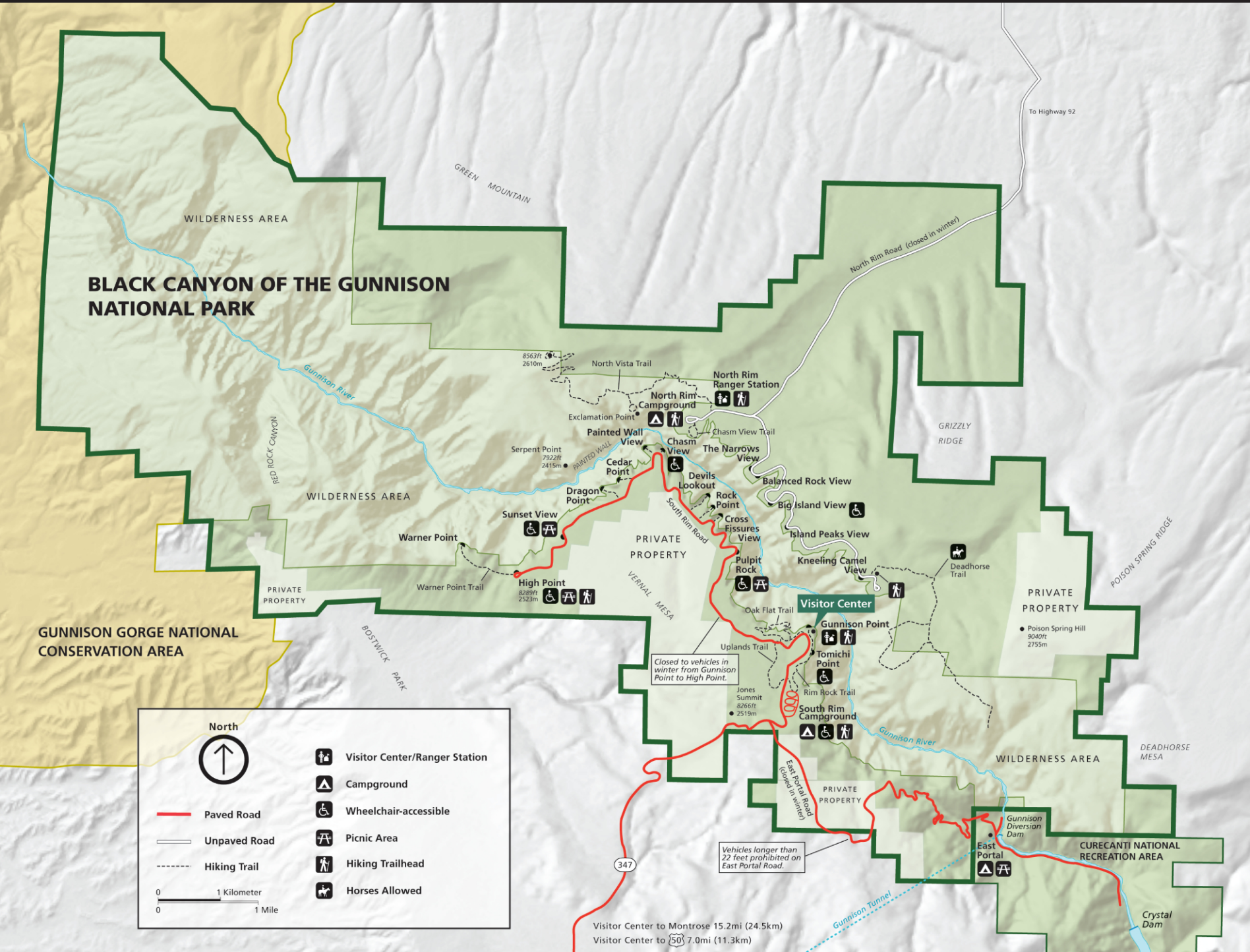


Black Canyon of the Gunnison

National Park
U.S. Department of the Interior



North

- Visitor Center/Ranger Station
- Campground
- Wheelchair-accessible
- Picnic Area
- Hiking Trailhead
- Horses Allowed
- Paved Road
- Unpaved Road
- Hiking Trail

0 1 Kilometer
0 1 Mile

Visitor Center to Montrose 15.2mi (24.5km)
Visitor Center to 7.0mi (11.3km)

Vehicles longer than 22 feet prohibited on East Portal Road.

Closed to vehicles in winter from Gunnison Point to High Point.

To Highway 92

North Rim Road (closed in winter)

East Portal Road (closed in winter)

Gunnison Tunnel