

3rd Annual
GRAND ENDURO

June 1-2, 2019

Presented by:



Grand Junction, Colorado

Table Contents

Sponsors

Welcome & Meet the Participants!

Grand Enduro Schedule

Event Beneficiary

Venue & Vendors

Rules & Tips

Event Map

Awards

Grand Valley Attractions Map

Downtown Dining Map

Also Happening This Weekend

Hotels & Camping

MAD Mission & Upcoming Events

WWW.GRANDENDURO.COM

Welcome to the 3rd Annual



Presented to you by:

Stage Sponsors:



HANDLEBAR
Tap House



Supporting Sponsors:



Healing Options West



WWW.GRANDENDURO.COM

Welcome to the

3rd Annual



MAD Racing Colorado secured the permits to take you down this legendary route for the 3rd year in a row, guaranteeing you unforgettable terrain, remarkable scenery and memories that are forever yours.

Meet the Participants



Erik Brygger is a mechanical engineering student at CMU and works at [Bicycle Outfitters](#). When he graduates, he wants a career designing bike components.

Dana VanVoorhees is an avid mountain biker creating a community of women who want to hone their biking skills. If that's you, you are warmly invited to [connect with Dana on Facebook](#). When she's not on a bike, Dana works as a nurse at the Grand Junction Regional Center.



WWW.GRANDENDURO.COM



When he's not enduro racing, Josh Barnes is a YouTuber and a flight instructor at the Colorado Mesa University flight degree program he helped create. You can find palm-sweating, stomach-dropping GoPro Grand Enduro 2018 footage of Josh on his [Rado Life YouTube channel](#).

Sarah Allen is the marketing director at [Mountain Racing Products](#), a top quality mountain bike suspension and component manufacturer in Grand Junction, Colorado. You'll see her at the 3rd Annual Grand Enduro on a bike in tip top shape. Follow MRP on [Facebook](#) and [Instagram](#).



WWW.GRANDENDURO.COM

Schedule

Friday 5/31

8:00am - 5:00pm : Course pre-ride available at your own risk - not all markings will be in place & no medical monitoring will be available!

*Sun sets @ 8:30pm - we encourage you to start no later than 5pm for pre-ride!

5:00pm-8:00pm: Packet pick up / Registration @ Bicycle Outfitters.

Saturday 6/1

8:00am - 12:00pm: Packet pick up @ Bicycle Outfitters

8:00am - 3:00pm: Course open for pre-ride

4:00pm: Grand Enduro Prologue (Amateur categories first 4-5pm, Pros 5:30pm)

5:00pm: Live music starts @ Handlebar Taphouse, by Zac Grant Trio. Leading up to racer's meeting as you wait for your seeding positions!

7:00pm: Racer meeting @ Handlebar Taphouse - get your start time slots. Prologue results posted

You must attend racer's meeting to get your assigned start time!

7:30pm: Another set of live music @ Handlebar Taphouse, by Jack & Jill

Sunday 6/2: Race Day!

7:15am: Load shuttles @ Handlebar.

7:30am: Shuttles begin from Handlebar Tap House.

9:00am: Suggested time for mandatory pedal transfer to Stage 1 (Pros only).

9:30am: Begin Amateur / Master / Junior riders @ 30 - 1 minute second stagger starts.

First come, first serve for stages 2 and 3. 1 minute intervals.

2:00pm: Live music @ Handlebar Taphouse by TBA.

5:00pm (approx.): Awards / ceremony time @ Handlebar Taphouse.

WWW.GRANDENDURO.COM

3rd Annual Grand Enduro Event Beneficiary

COPMOBA is the primary beneficiary of the 3rd Annual Grand Enduro.

As a small way to thank COPMOBA for what they are doing, MAD Racing Colorado, is giving \$20 per volunteer shift filled during the Grand Enduro.

The Colorado Plateau Mountain Bike Trail Association, Inc. (COPMOBA) is a member-supported, nonprofit organization of volunteer mountain bikers dedicated to advocating for, building, and maintaining sustainable singletrack mountain bike trails on the Colorado Plateau in Western Colorado.



Visit their website here:
WWW.COPMOBA.ORG

Follow COPMOBA
on Facebook

www.facebook.com/copmoba



WWW.GRANDENDURO.COM

Venue:



Join us at the event venue, Handlebar Tap House, for live music, craft beer, and a delicious burger!



Vendors:



WWW.GRANDENDURO.COM

Rules and Tips

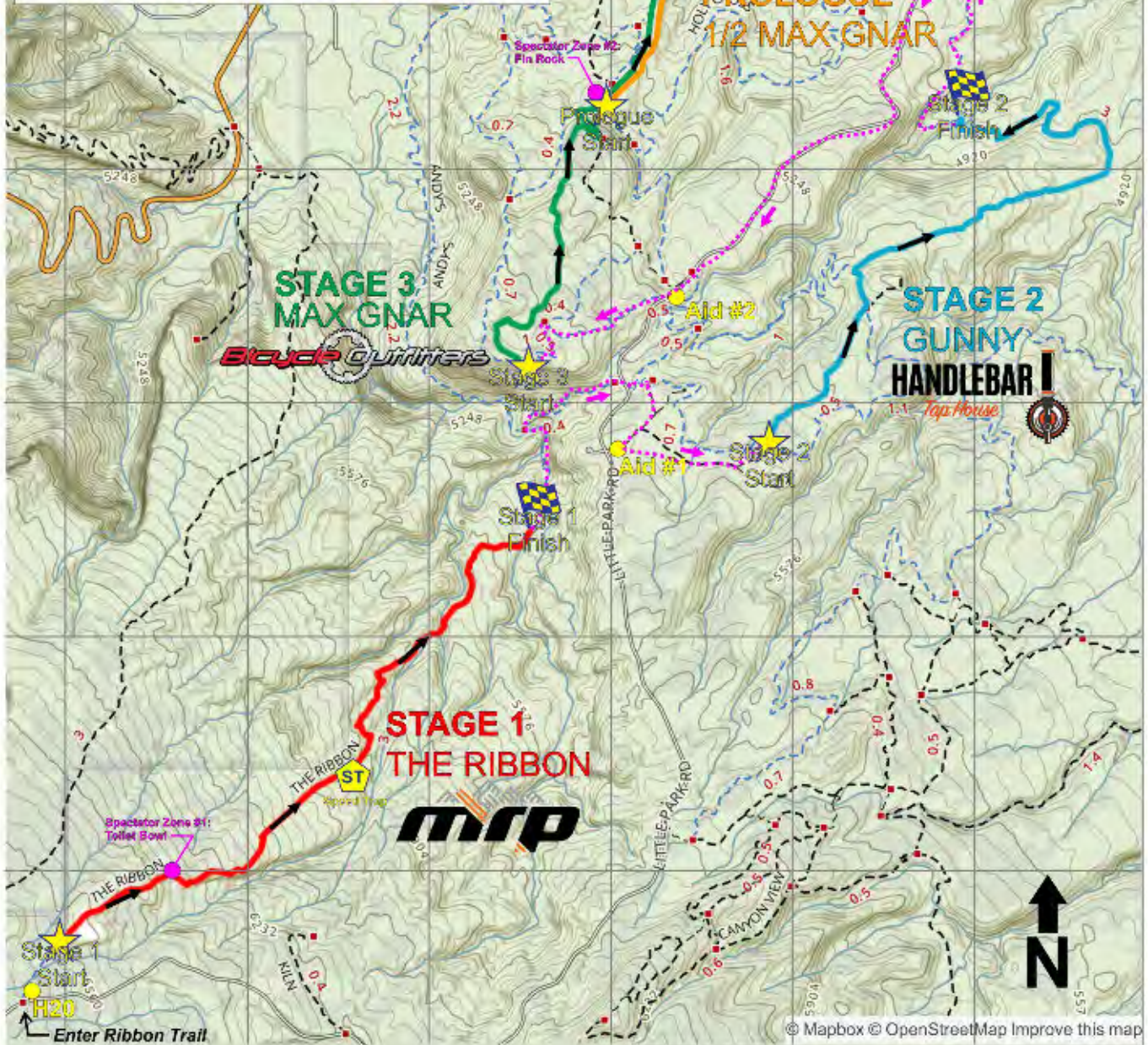
- ◆ MAD Racing Colorado and BLM are working hard together to ensure quality of the surrounding environment is preserved by minimizing impacts.
- ◆ Stay within the singletrack tread and pass in areas that allow for safe and responsible passing and do not cut corners. Participants that need to dismount from their bicycle should move their bike and themselves off the trail in a manner that doesn't impact the soil or vegetation. Avoid touching the delicate, black crust on the soil (cryptobiotic soil).
- ◆ All enduro mountain biking participants are required to wear eye protection and a helmet that complies with U.S. CPSC safety standards for bicycle helmets.
- ◆ Each rider is expected to complete the entire course. If they do not complete the entire course, the participant is considered a Did Not Finish (DNF). If a rider is a DNF they should not cross the finish line upon return to the start/finish-line area. They are expected to report to the Timing Tent at any stage, to inform Event Timing they are no longer on the course and did not complete the ride.
- ◆ Each participant must be considerate of other riders when passing or being passed. Verbal communication and/or the use of a bell are necessary for a successful pass. When being passed, please provide adequate space when available for the faster rider to go by.
- ◆ Participants are required to complete the entire course on the same bike they started the event on. All bikes should be of the 'mountain bike' genre (geometry, tires, cranks, handlebars, etc.).
- ◆ Always abide by the laws and rules of the road and/or governing land agency when appropriate. The roads are not managed and regulated during the event. Ride with caution!
- ◆ Headphones connected to MP3 players or similar devices that prohibit a rider's ability to hear activity around them are not permitted.
- ◆ Littering is unacceptable and will not be tolerated.
- ◆ Thank the volunteers; the event couldn't happen without them.
- ◆ Please consider spectating at the designated spectator zones and respect the surrounding soils / vegetation. BLM evaluates these spectator areas to protect sensitive resources such as endangered hookless cactus species and cultural resources. If you have any questions or concerns, please email them to madness@madracingcolorado.com. In the meantime, your cooperation is greatly appreciated.

WWW.GRANDENDURO.COM



EST. 2016
GRAND JUNCTION,
COLORADO

3RD ANNUAL - 2019 EDITION



**Bangs Canyon Parking Lot
(Amateurs Drop Off)**

To Ribbon Trail

All or part of the operation is conducted on Public Lands under special permit WCO-3060-19-011 from the U.S. Bureau of Land Management

Please consider speaking at the designated spectator zones and respect the surrounding soil / vegetation. BLM enforces these spectator areas to protect sensitive resources such as endangered flowers, scarce species and cultural resources. If you have any questions or concerns, please email them to roadmap@grandenduro.com. In the meantime, your cooperation is greatly appreciated.

Map Legend:

- Main Transfer Routes
- Designated Spectator Zones*
- Start areas
- Finish Lines
- Speed Trap
- Water / Aid Stations

Awards

Racers in the Pro/Open category are eligible for cash prizing. We will have an equal payout for men and women

Totaling \$2,000!

1ST MALE / FEMALE = \$500

2ND MALE / FEMALE = \$250

3RD MALE / FEMALE = \$125

4TH MALE / FEMALE = \$75

5TH MALE / FEMALE = \$50

Amateur podium finishes (3-deep) will receive great prizes from these event sponsors!



WWW.GRANDENDURO.COM

CLICK ON THIS MAP FOR DETAILS

Grand Junction, Colorado

MAP LEGEND

- Locations
- Attractions
- Restaurants
- Transportation

2017 AREA MAP

GRAND JUNCTION COLORADO'S WINE COUNTRY

COMPLIMENTS OF THE GRAND JUNCTION VISITOR & CONVENTION BUREAU
 Visitor Center | 740 Horizon Drive, East St #1-120
 970.254.4060 | Open 363 days a year
 VisitGrandJunction.com

TRANSPORTATION Getting Here

- 113 AIRPORT
- 114 GETTING TO HIS LINKS
- 115 ROAD NUMBER SIGNAL LINES
- 116 LAJ REGIONAL AIRPORT

Shuttles & Limousines

- 117 RESTOR GARAGE OR VEHICLE

Motorized Sports Rentals

- 117 BIKING SUPPLIES
- 118 SKI/BOAT/BOAT
- 119 SKI/BOAT/BOAT
- 120 SKI/BOAT/BOAT
- 120 SKI/BOAT/BOAT
- 120 SKI/BOAT/BOAT

WINTER ACTIVITIES

- 100 FORECASTERS WITH REPORT

WINE COUNTRY

- 101 SHERIDAN PARK WATERFALL PARK
- 102 LINCOLN PARK WATER FALL POOL
- 103 WATERFALL PARK
- 104 COMMUNITY CENTER POOL
- 105 PALMER PARK
- 106 WESTLAW WATERFALL PARK

Tours & Adventures (Guided)

- 108 GRAND JUNCTION SYMPHONY
- 109 MUSEUM OF THE WEST
- 110 WESTERN CO. BOTANICAL GARDENS
- 111 ROCKY MOUNTAIN SPA TOUR
- 112 SOUTHWEST HISTORIC

WINERIES & TASTING ROOMS

- 40 HAVIT WINERY
- 41 COLSON WINERY
- 42 THE GRAND MESA WINERY / TASTING ROOM
- 43 COLSON AT THE OXBLISS
- 44 COLSON WINERY TASTING ROOM
- 45 BEEHIVE CANYON WINERY
- 46 BEEHIVE WINERY
- 47 HONEY CREEK WINERY
- 48 BEEHIVE WINERY
- 49 BEEHIVE WINERY
- 50 BEEHIVE WINERY
- 51 BEEHIVE WINERY
- 52 BEEHIVE WINERY
- 53 BEEHIVE WINERY
- 54 BEEHIVE WINERY
- 55 BEEHIVE WINERY
- 56 BEEHIVE WINERY
- 57 BEEHIVE WINERY
- 58 BEEHIVE WINERY
- 59 BEEHIVE WINERY
- 60 BEEHIVE WINERY
- 61 BEEHIVE WINERY
- 62 BEEHIVE WINERY

Public Event Facilities

- 64 BEEHIVE WINERY
- 65 BEEHIVE WINERY
- 66 BEEHIVE WINERY
- 67 BEEHIVE WINERY
- 68 BEEHIVE WINERY
- 69 BEEHIVE WINERY
- 70 BEEHIVE WINERY
- 71 BEEHIVE WINERY
- 72 BEEHIVE WINERY
- 73 BEEHIVE WINERY
- 74 BEEHIVE WINERY
- 75 BEEHIVE WINERY
- 76 BEEHIVE WINERY
- 77 BEEHIVE WINERY
- 78 BEEHIVE WINERY
- 79 BEEHIVE WINERY
- 80 BEEHIVE WINERY
- 81 BEEHIVE WINERY
- 82 BEEHIVE WINERY
- 83 BEEHIVE WINERY
- 84 BEEHIVE WINERY
- 85 BEEHIVE WINERY
- 86 BEEHIVE WINERY
- 87 BEEHIVE WINERY
- 88 BEEHIVE WINERY
- 89 BEEHIVE WINERY
- 90 BEEHIVE WINERY
- 91 BEEHIVE WINERY
- 92 BEEHIVE WINERY
- 93 BEEHIVE WINERY
- 94 BEEHIVE WINERY
- 95 BEEHIVE WINERY

Activities

- 63 THE ART CENTER
- 64 THEATRE
- 65 COLORADO MESA UNIVERSITY
- 66 COLORADO MESA UNIVERSITY
- 67 CROSS COUNTRY HISTORY SITE
- 68 BEEHIVE WINERY MUSEUM
- 69 BEEHIVE WINERY MUSEUM
- 70 BEEHIVE WINERY MUSEUM
- 71 BEEHIVE WINERY MUSEUM
- 72 BEEHIVE WINERY MUSEUM
- 73 BEEHIVE WINERY MUSEUM
- 74 BEEHIVE WINERY MUSEUM
- 75 BEEHIVE WINERY MUSEUM
- 76 BEEHIVE WINERY MUSEUM
- 77 BEEHIVE WINERY MUSEUM
- 78 BEEHIVE WINERY MUSEUM
- 79 BEEHIVE WINERY MUSEUM
- 80 BEEHIVE WINERY MUSEUM
- 81 BEEHIVE WINERY MUSEUM
- 82 BEEHIVE WINERY MUSEUM
- 83 BEEHIVE WINERY MUSEUM
- 84 BEEHIVE WINERY MUSEUM
- 85 BEEHIVE WINERY MUSEUM
- 86 BEEHIVE WINERY MUSEUM
- 87 BEEHIVE WINERY MUSEUM
- 88 BEEHIVE WINERY MUSEUM
- 89 BEEHIVE WINERY MUSEUM
- 90 BEEHIVE WINERY MUSEUM
- 91 BEEHIVE WINERY MUSEUM
- 92 BEEHIVE WINERY MUSEUM
- 93 BEEHIVE WINERY MUSEUM
- 94 BEEHIVE WINERY MUSEUM
- 95 BEEHIVE WINERY MUSEUM

Wineries & Tasting Rooms

- 40 HAVIT WINERY
- 41 COLSON WINERY
- 42 THE GRAND MESA WINERY / TASTING ROOM
- 43 COLSON AT THE OXBLISS
- 44 COLSON WINERY TASTING ROOM
- 45 BEEHIVE CANYON WINERY
- 46 BEEHIVE WINERY
- 47 HONEY CREEK WINERY
- 48 BEEHIVE WINERY
- 49 BEEHIVE WINERY
- 50 BEEHIVE WINERY
- 51 BEEHIVE WINERY
- 52 BEEHIVE WINERY
- 53 BEEHIVE WINERY
- 54 BEEHIVE WINERY
- 55 BEEHIVE WINERY
- 56 BEEHIVE WINERY
- 57 BEEHIVE WINERY
- 58 BEEHIVE WINERY
- 59 BEEHIVE WINERY
- 60 BEEHIVE WINERY
- 61 BEEHIVE WINERY
- 62 BEEHIVE WINERY

Public Event Facilities

- 64 BEEHIVE WINERY
- 65 BEEHIVE WINERY
- 66 BEEHIVE WINERY
- 67 BEEHIVE WINERY
- 68 BEEHIVE WINERY
- 69 BEEHIVE WINERY
- 70 BEEHIVE WINERY
- 71 BEEHIVE WINERY
- 72 BEEHIVE WINERY
- 73 BEEHIVE WINERY
- 74 BEEHIVE WINERY
- 75 BEEHIVE WINERY
- 76 BEEHIVE WINERY
- 77 BEEHIVE WINERY
- 78 BEEHIVE WINERY
- 79 BEEHIVE WINERY
- 80 BEEHIVE WINERY
- 81 BEEHIVE WINERY
- 82 BEEHIVE WINERY
- 83 BEEHIVE WINERY
- 84 BEEHIVE WINERY
- 85 BEEHIVE WINERY
- 86 BEEHIVE WINERY
- 87 BEEHIVE WINERY
- 88 BEEHIVE WINERY
- 89 BEEHIVE WINERY
- 90 BEEHIVE WINERY
- 91 BEEHIVE WINERY
- 92 BEEHIVE WINERY
- 93 BEEHIVE WINERY
- 94 BEEHIVE WINERY
- 95 BEEHIVE WINERY

Activities

- 63 THE ART CENTER
- 64 THEATRE
- 65 COLORADO MESA UNIVERSITY
- 66 COLORADO MESA UNIVERSITY
- 67 CROSS COUNTRY HISTORY SITE
- 68 BEEHIVE WINERY MUSEUM
- 69 BEEHIVE WINERY MUSEUM
- 70 BEEHIVE WINERY MUSEUM
- 71 BEEHIVE WINERY MUSEUM
- 72 BEEHIVE WINERY MUSEUM
- 73 BEEHIVE WINERY MUSEUM
- 74 BEEHIVE WINERY MUSEUM
- 75 BEEHIVE WINERY MUSEUM
- 76 BEEHIVE WINERY MUSEUM
- 77 BEEHIVE WINERY MUSEUM
- 78 BEEHIVE WINERY MUSEUM
- 79 BEEHIVE WINERY MUSEUM
- 80 BEEHIVE WINERY MUSEUM
- 81 BEEHIVE WINERY MUSEUM
- 82 BEEHIVE WINERY MUSEUM
- 83 BEEHIVE WINERY MUSEUM
- 84 BEEHIVE WINERY MUSEUM
- 85 BEEHIVE WINERY MUSEUM
- 86 BEEHIVE WINERY MUSEUM
- 87 BEEHIVE WINERY MUSEUM
- 88 BEEHIVE WINERY MUSEUM
- 89 BEEHIVE WINERY MUSEUM
- 90 BEEHIVE WINERY MUSEUM
- 91 BEEHIVE WINERY MUSEUM
- 92 BEEHIVE WINERY MUSEUM
- 93 BEEHIVE WINERY MUSEUM
- 94 BEEHIVE WINERY MUSEUM
- 95 BEEHIVE WINERY MUSEUM

Wineries & Tasting Rooms

- 40 HAVIT WINERY
- 41 COLSON WINERY
- 42 THE GRAND MESA WINERY / TASTING ROOM
- 43 COLSON AT THE OXBLISS
- 44 COLSON WINERY TASTING ROOM
- 45 BEEHIVE CANYON WINERY
- 46 BEEHIVE WINERY
- 47 HONEY CREEK WINERY
- 48 BEEHIVE WINERY
- 49 BEEHIVE WINERY
- 50 BEEHIVE WINERY
- 51 BEEHIVE WINERY
- 52 BEEHIVE WINERY
- 53 BEEHIVE WINERY
- 54 BEEHIVE WINERY
- 55 BEEHIVE WINERY
- 56 BEEHIVE WINERY
- 57 BEEHIVE WINERY
- 58 BEEHIVE WINERY
- 59 BEEHIVE WINERY
- 60 BEEHIVE WINERY
- 61 BEEHIVE WINERY
- 62 BEEHIVE WINERY

Public Event Facilities

- 64 BEEHIVE WINERY
- 65 BEEHIVE WINERY
- 66 BEEHIVE WINERY
- 67 BEEHIVE WINERY
- 68 BEEHIVE WINERY
- 69 BEEHIVE WINERY
- 70 BEEHIVE WINERY
- 71 BEEHIVE WINERY
- 72 BEEHIVE WINERY
- 73 BEEHIVE WINERY
- 74 BEEHIVE WINERY
- 75 BEEHIVE WINERY
- 76 BEEHIVE WINERY
- 77 BEEHIVE WINERY
- 78 BEEHIVE WINERY
- 79 BEEHIVE WINERY
- 80 BEEHIVE WINERY
- 81 BEEHIVE WINERY
- 82 BEEHIVE WINERY
- 83 BEEHIVE WINERY
- 84 BEEHIVE WINERY
- 85 BEEHIVE WINERY
- 86 BEEHIVE WINERY
- 87 BEEHIVE WINERY
- 88 BEEHIVE WINERY
- 89 BEEHIVE WINERY
- 90 BEEHIVE WINERY
- 91 BEEHIVE WINERY
- 92 BEEHIVE WINERY
- 93 BEEHIVE WINERY
- 94 BEEHIVE WINERY
- 95 BEEHIVE WINERY

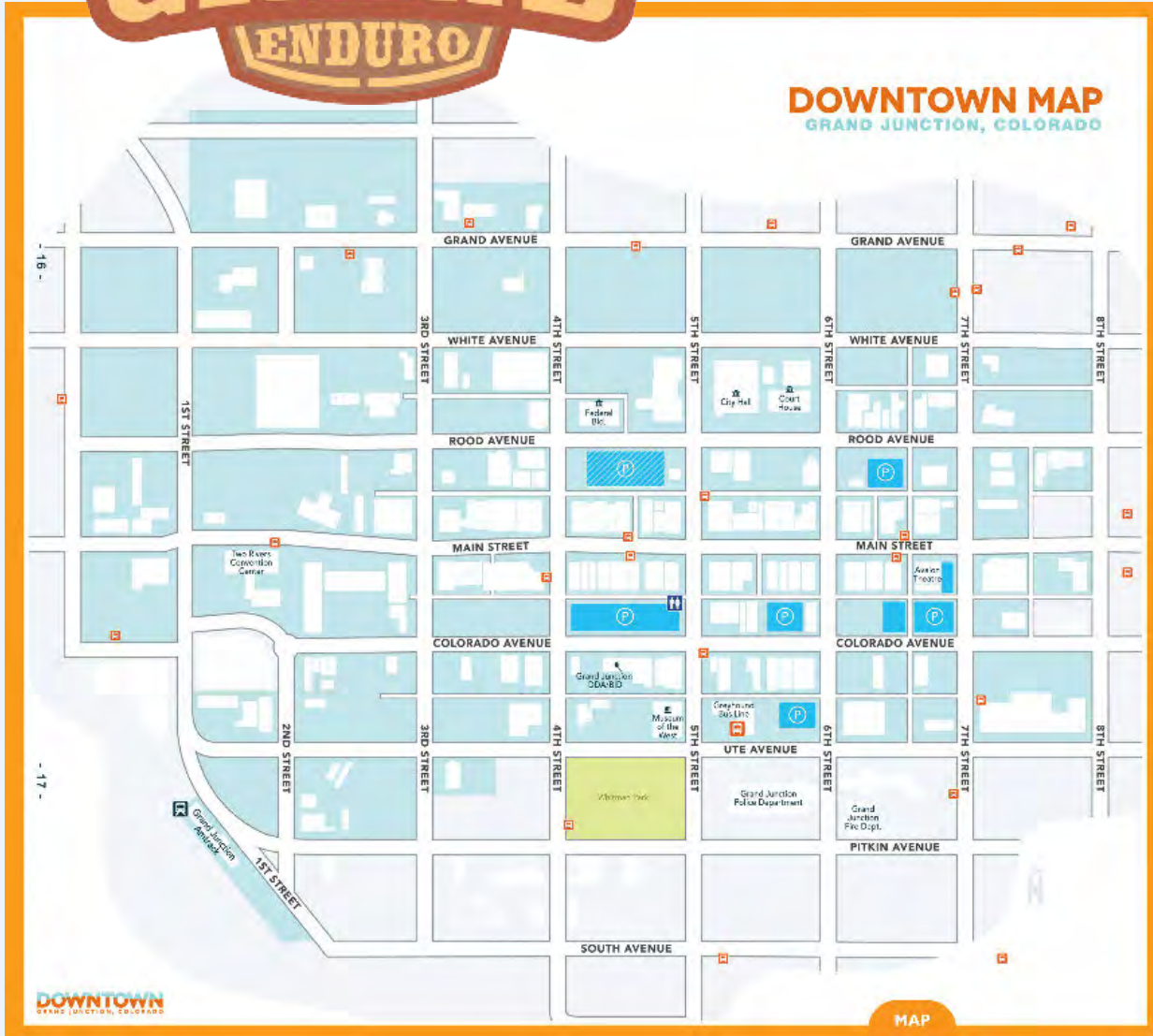
Activities

- 63 THE ART CENTER
- 64 THEATRE
- 65 COLORADO MESA UNIVERSITY
- 66 COLORADO MESA UNIVERSITY
- 67 CROSS COUNTRY HISTORY SITE
- 68 BEEHIVE WINERY MUSEUM
- 69 BEEHIVE WINERY MUSEUM
- 70 BEEHIVE WINERY MUSEUM
- 71 BEEHIVE WINERY MUSEUM
- 72 BEEHIVE WINERY MUSEUM
- 73 BEEHIVE WINERY MUSEUM
- 74 BEEHIVE WINERY MUSEUM
- 75 BEEHIVE WINERY MUSEUM
- 76 BEEHIVE WINERY MUSEUM
- 77 BEEHIVE WINERY MUSEUM
- 78 BEEHIVE WINERY MUSEUM
- 79 BEEHIVE WINERY MUSEUM
- 80 BEEHIVE WINERY MUSEUM
- 81 BEEHIVE WINERY MUSEUM
- 82 BEEHIVE WINERY MUSEUM
- 83 BEEHIVE WINERY MUSEUM
- 84 BEEHIVE WINERY MUSEUM
- 85 BEEHIVE WINERY MUSEUM
- 86 BEEHIVE WINERY MUSEUM
- 87 BEEHIVE WINERY MUSEUM
- 88 BEEHIVE WINERY MUSEUM
- 89 BEEHIVE WINERY MUSEUM
- 90 BEEHIVE WINERY MUSEUM
- 91 BEEHIVE WINERY MUSEUM
- 92 BEEHIVE WINERY MUSEUM
- 93 BEEHIVE WINERY MUSEUM
- 94 BEEHIVE WINERY MUSEUM
- 95 BEEHIVE WINERY MUSEUM

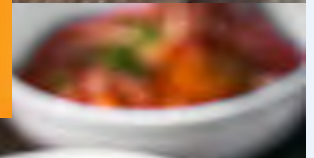




Dining Downtown



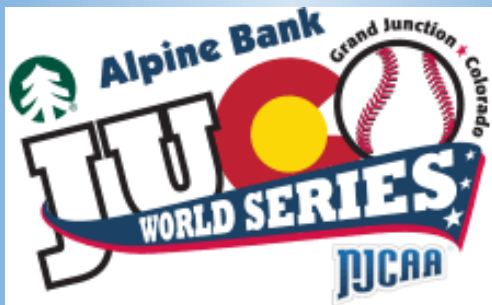
**Click on
Map for
Downtown
Area
Restaurants.**



WWW.GRANDENDURO.COM

Also Happening This Weekend:

We encourage people to make this into a family trip. The beginning of June is one of the best times to visit the Grand Valley with great weather and endless fun activities.

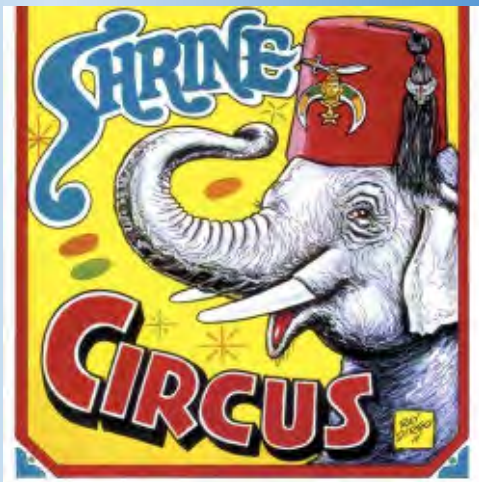


<https://jucogj.org/>

Junior
College
Baseball
World
Series
(JUCO)



Western
Colorado
Shrine Circus
is June 1st.
1:00 & 4:30 &
7:30 pm only.



<https://www.eventbrite.com/e/western-colorado-shrine-circus-2019-grand-ijunction-co-tickets-59733027092?aff=efbevent>

Mike the Headless
Chicken Festival on May
31st is a super fun family
festival in Fruita, CO.
This festival is dedicated
to the amazing story of
one chicken's will to live.

<https://www.miketheheadlesschicken.org/mike>

WWW.GRANDENDURO.COM

Hotels/Camping



The Camp is a great place to be for the weekend because you'll be just a hop and skip from everything you need: race staff, groceries, Handlebar Taphouse restaurant, gas & convenience store, and Trailhead Coffee Bar!

One spot includes: option #1) 6 people, 2 tents, and 2 vehicles; or option #2) 1 RV. Call The Camp at (970) 549-0849, mention you're racing the Grand Enduro and reserve your spot now!

If camping is not your cup of tea... Then check out some rockin' Hotel Deals at [HotelPlanner.com!](http://HotelPlanner.com)



WWW.GRANDENDURO.COM



Upcoming Events Hosted by:

MOUNTAIN AND DESERT RACING COLORADO

Our vision is to enrich people's lives by providing an environment to recognize their full potential. Providing affordable quality events while supporting local businesses and building community is the MAD mission.

#PUSHTHEEDGE.

August 17, 2019

2nd Annual Just Peachy Run Races

Palisade, CO



September 7 - 8, 2019

8th Annual Desert's Edge Tri Fest

Fruita, CO

October - December 2019

West Slope Cross Cup

Cyclocross Series

Fruita, Grand Junction, Palisade, New Castle

WWW.GRANDENDURO.COM

